

### Rated Specifications

Type	YP-060PF3	YP-100PF3	
Rated input voltage	AC380(±20%)		
No. of phases	3		
Rated frequency	50/60		
Rated input	kVA	9.81 (Cutting) /11.32 (Gouging)	17.67 (Cutting) /19.82 (Gouging)
	kW	7.27 (Cutting) /8.48 (Gouging)	13.87 (Cutting) /15.95 (Gouging)
Maximum no-load voltage	295	300	
Rated output current	60	100	
Rated output voltage	104 (Cutting) 124 (Gouging)	120 (Cutting) 140 (Gouging)	
Rated duty cycle	100	60	
Output current	15-60	15-100	
Control process	IGBT Inverter		
Power source cooling method	Forced cooling		
Enclosure protection Class	IP21S		
Insulation grade	Main transformer 130°C (Reactor 180°C)		
Electromagnetic compatibility classification	A		
Dimension(W×D×H)	290 x 606 x 559		
Weight	43	48	

\*Note: The output ranges are tested on the conditions of resistance load according to GB15579.1-2013.

### Electrode and Cutting Nozzle

Short	Short cutting nozzle	TET01110 / TET01310 / TET01512 / TSM06626
	Short Electrode	TET02033
Long	Long cutting nozzle	TET01114 / TET01313 / TET01513
	Long Electrode	TET02040

### World-class Welding Quality at Your Doorstep

- Panasonic Smart Factory Solutions India has set-up its state-of-the-art manufacturing facility in Jhajjar, Haryana, India. So our globally proven range of welding equipment including MMAW, MIG/MAG, TIG, Plasma Cutting, Welding Accessories, and Welding Robots are now available at your doorstep.
- Assured commitment to long-term product support in terms of Sales, Service and Spares.
- All-India Sales and Service network.



**Range of Welding Equipment: MMAW | MIG/MAG | TIG | Plasma Cutting | Welding Accessories | Welding Robots**  
Panasonic has set-up its own state-of-the-art welding equipment manufacturing facility at Jhajjar near Gurugram, Haryana, India.

### PANASONIC LIFE SOLUTIONS INDIA PVT. LTD.

(Division Company: Panasonic Smart Factory Solutions India)

**Head Office:** 12th Floor, Ambience Tower, Ambience Island, NH-8, Gurugram - 122002, Haryana, India.  
**Phone: +91-124-4871300**

**Factory:** Village Bid Dadri, Tehsil and District: Jhajjar - 124103, Haryana, India.

**Eastern Regional Office:** Acropolis Mall, 8/6, Plot No. 1858, 8th Floor, Rajdanga Main Road, Opp. Kasba New Market, Kolkata - 700016, West Bengal.

**Western Regional Office:** 5th Floor, Unit No. 502 & 503, Windfall Building, Sahar Plaza Complex, Survey No. 179A to 179H, J. B. Nagar, Andheri East, Mumbai - 400058, Maharashtra.

**Southern Regional Office:** 66th Floor, Polyhose Towers, No. 86, Anna Salai, Guindy, Chennai-600032, Tamil Nadu

**Central Regional Office:** Ayodhya, 119, 2nd Floor, Bajaj Nagar, Nagpur - 440010, Maharashtra.

**Sales Offices at Ahmedabad, Bengaluru, Bhubaneswar, Mumbai and Hyderabad.**

For more information and service related queries please write to: [Psfins.enquiry@in.panasonic.com](mailto:Psfins.enquiry@in.panasonic.com)



Authorised Sales & Service Provider  
**+91-9729900200**

PSFSIN / YD-060/100PF / 022023

### Power Capacity and Connecting Cables

Cutting Power Source	YP-060PF3	YP-100PF3	
Input power	AC 3 phase 380 V		
The power plant capacity	Grid power	Over 15 kVA	Over 25 kVA
	Generator	Over 11.32kVA twice capacity	Over 19.82kVA twice capacity
Input protection (Distributing Box)	Fuse	40 A	60 A
	Circuit breaker	60 A	
Electric cable	Power input side	Over 6mm <sup>2</sup>	
	Power output side	Over 10mm <sup>2</sup>	Over 16mm <sup>2</sup>
	Ground	≥the cross-section of the input cable	

### Applicable Cutting Torch

Model	Rated Current	Shape	Cooling Method	Length	Duty
YT-06PD3HAE	60	Angular	Air Cooling	10m	100%
YT-06PD3HAF	60	Angular	Air Cooling	20m	100%
YT-06PD3HAG	60	Angular	Air Cooling	30m	100%
YT-06PE3HAE	60	Pen-Type	Air Cooling	10m	100%
YT-06PE3HAF	60	Pen-Type	Air Cooling	20m	100%
YT-06PE3HAG	60	Pen-Type	Air Cooling	30m	100%
YT-10PD3HAE	100A	Angular	Air Cooling	10m	60%
YT-10PD3HAF	100A	Angular	Air Cooling	20m	60%
YT-10PD3HAG	100A	Angular	Air Cooling	30m	60%
YT-10PE3HAE	100A	Pen-Type	Air Cooling	10m	60%
YT-10PE3HAF	100A	Pen-Type	Air Cooling	20m	60%
YT-10PE3HAG	100A	Pen-Type	Air Cooling	30m	60%

Panasonic reserves the right to alter the specifications without notice.

# Panasonic

# YP-060/100PF

## Full Digital Controlled Plasma Cutting Machine



## Full Digital

Easy-to-operate "Cutting Navigation Function"

### Important Features

- The cutting performance is significantly improved by full digital control technology.
- High-quality cutting results can be effortlessly achieved by using the unique cutting navigation function.
- New arrival cutting torch offers you high accuracy operation and long using life.



### Cutting Thickness

Thickness (mm)	60PF(mm)		100PF(mm)	
	Contact	Non-contact	Contact	Non-contact
Carbon steel	12	36	12	40
Stainless steel	12	35	12	40
Aluminum	10	20	10	30
Copper	5	8	6	10

The cutting and piercing capacities for carbon steel.

Model	Set cutting current	Recommended cutting thickness	Recommended piercing thickness (No-contact)
YD-060PF	60A (Max.)	≤12mm	≤12mm
YP-100PF	100A (Max.)	≤25mm	≤16mm

[www.panasonic.com/in/business/introduction.html](http://www.panasonic.com/in/business/introduction.html)



# Full Digital Controlled Plasma Cutting Machine

The cutting performance is further geared up: high arc start successful rate, fast cutting speed, high verticality and fine smoothness of cut surface, less amount of slag adhering on the surface and small deformation even for the thin plate.



Machine can be stacked in two layers for transportation and storage.

## Much Better Cutting Performance

### The comparison on cutting performance

The new-type cutting torch powered by full digital machine offers you high-level of cutting solution.

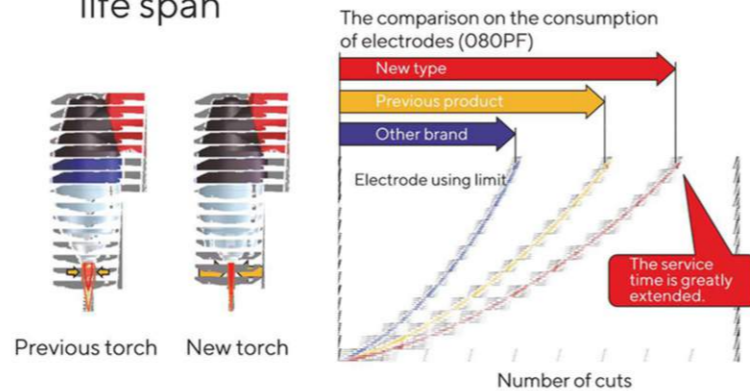
Item	YT-10PD3HAE+YP-100PF3HGE	YT-10PD2HAE+YP-100PSHGE	
Cutting speed	0.3m/min		
The comparison on cutting results	The smoothness	<p>About Ra2.52</p>	<p>About Ra6.3</p>
	The cut width	<p>2.35mm</p>	<p>2.85mm</p>
	The amount of adhering slag	<p>Very less</p>	<p>Acceptable</p>
	The verticality of cut surface	<p>Fine</p>	<p>OK</p>

## The Long-lasting Plasma Arc Cutting Torch

### Enhanced operability and durability



### Higher precision cutting tip with prolonged life span



### Equipped with Torch Protection Function

The output current of the machine can be limited within the rated cutting current specified on the panel.

## Easy-to-operate "Cutting Navigation Function"

The professional cutting parameter setting function makes more convenient, professional and personalized operations possible.

### The optimal cutting conditions can be set with ease



The cutting navigation can be started by just pushing a button!

1. Material Selection  
Turn the dial to pick up material (Carbon steel/SUS/Aluminum)
2. Thickness Selection
3. Manual/Auto Selection

## Air Pressure Monitoring Function equipped

### 1. Digital display for easy fine adjustment

The self-draining air filter is provided.

### 2. Air pressure can be monitored

When air pressure exceeds the recommended range, the machine prompts a warning message which can be controlled by the operator.

### Digital control panel



- ① Digital Display
- ② Operation Lock
- ③ Air Pressure Monitoring
- ④ Cutting Torch Life Span Monitoring
- ⑤ Cutting Navigation
- ⑥ Specific Settings

## Air Plasma Arc Gouging

- Compared with conventional arc air gouging, the noise level reduces over 10 dB and consumables fill can be saved.
- Air plasma arc gouging can be easily realized by replacing the cutting nozzle with gouging nozzle.

The Gouging Result

	Results	Width (mm)	Depth (mm)
Carbon steel		10.4	5.3
Aluminum		9.0	4.4
Stainless steel		9.4	4.7

## By Using New Type Cutting Torch, Thin Plate can be Cut with No Difficulty.

- Thanks to less heat affected zone and deformation, YT-03PD3 cutting torch makes excellent cutting result come true.

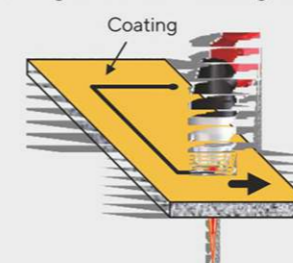
Short cutting nozzle		TET00005	Long cutting nozzle		TET00003
Short electrode		TET00006	Long electrode		TET00004

Torch	Comparison on the cutting results
YT-03PD3HAE	
Other company's cutting torch	

## Abundant Cutting Functions for Different Applications

### 1. Cutting coated steel plate

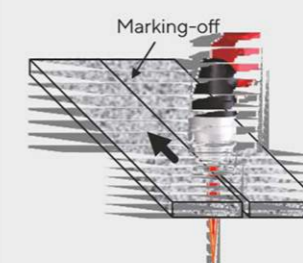
Cutting without removing coating



Caution! The harmful gas can be generated during cutting. Proper ventilation and safety appliance are highly recommended.

### 2. Pulse Cutting

Easy to cut thin plate



### 3. Piercing

Punch a hole on the thin plate can be realized.

